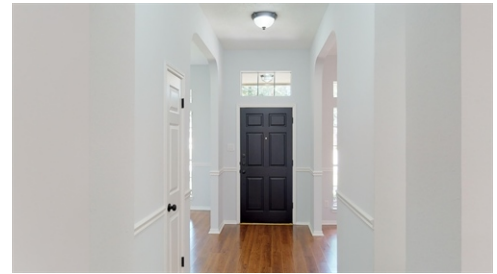


# Welcome Home



\$ 225,000



30906 Sifton Drive, Spring, TX 77386

WEB: [30906Sifton.com](http://30906Sifton.com)

- » Beds: 4 | Baths: 2 Full
- » MLS #: 60473356
- » Single Family | 2,236 ft<sup>2</sup> | Lot: 6,988 ft<sup>2</sup>
- » Light & Bright, Walls of Windows, Open Concept
- » Expansive Dream Kitchen with Granite Counters Open to Family Room
- » Vaulted Ceiling, Gas Log Fireplace with Mosaic Tile Surround
- » Spacious Master Retreat with Walk-In Closet, Soaking Tub, Travertine Floor
- » Centrally Located Near Parks, Pools, Schools, Shopping and Dining

QR Code



*Renee*

**Signature Services  
Realty Group  
Signature Services  
Beach Life**  
(713) 252-9973 (Renee)  
(281) 362-1502 (Fax)  
[Renee@ReneeFussell.com](mailto:Renee@ReneeFussell.com)  
<http://www.ReneeFussell.com>



*Raising the BAR to a Higher Standard*

**Signature Services Realty Group**  
1923 Highway 87  
Crystal Beach, TX 77650

2002 Timberloch Place  
Suite 200

The Woodlands, TX 77380

**Amazing! Light & Bright, Updated, Full Brick, 4 Bedroom, Single Story Home. Open Concept Features Walls of Windows, Formal Dining, Office/Flex Space, Breakfast Room, Chef's Dream Kitchen with Granite Counters, 70/30 Stainless Under Mount Sink and Bar Open To Vaulted Ceiling Family Room with Beam, Gas Log Fireplace and Built-Ins; Spacious Master Retreat with Walk-In Closet, Separate Shower, His/Her Vanities, Soaking Tub and Travertine Flooring; Bronze Fixtures, Ceiling Fans, Covered Front Porch, Back Patio, Finished Garage with Storage, Automatic Opener and Remote Entry; Full Fence, Landscaped. Centrally Located Near Parks, Pools, Schools, Shopping, Casual and Fine Dining! Easy Access to the Grand Parkway.**

